



# St Finn Barr's Catholic Primary School Invermay

Established in 1894 by the Presentation Sisters



## Leadership Team

Principal:	Liz Illingworth
Assistant Principal, Teaching & Learning:	Alice Cannon
Assistant Principal, Teaching:	Carmen Aylott

**Students (2015):** 282

**Staff (2015):** 21

<b>Electorates</b>	Bass	(Federal)	Mr Ross Hart (Labor Party)
	Bass	(State)	Mr Michael Ferguson (Liberal)
	Launceston City Council	(Local Gov't)	Albert van Zetten (Mayor)

November 2016

## About this Profile

This profile has been prepared to assist the school by bringing together relevant information about the school and neighbouring schools. The profile includes information about enrolments, including Catholic and non-Catholic enrolment trends, staffing and resourcing, funding and NAPLAN. Information in this profile was obtained from several sources, including the Catholic Education Office, the National Catholic Education Commission and *MySchool*.

Much of the information reported in this profile about your school and other schools is available publically, but the profile does contain information which might be considered to be sensitive, and this should be considered if information in this the profile is distributed. Information in this profile has been sourced from the National Catholic Education Commission's national Statistical portal. You may wish to access this information at <http://aces.catholic.edu.au>.

The intent of this profile is to provide you with information you require to assist your school continue to develop and improve. As such, it is not the intent that this profile remains a 'static' document, but one that evolves to provide information that you need. Consequently, this profile can only provide a 'starting point', and you are encouraged to request changes to improve this document.

The next edition of this profile will be prepared following the release of *MySchool* in March 2017. Please contact Crichton Smith at [Crichton.smith@cecnsw.catholic.edu.au](mailto:Crichton.smith@cecnsw.catholic.edu.au) or phone on (02) 9287-1553 or 0410 544 157 if you wish to improve next year's profile or wish to discuss aspects of this profile.

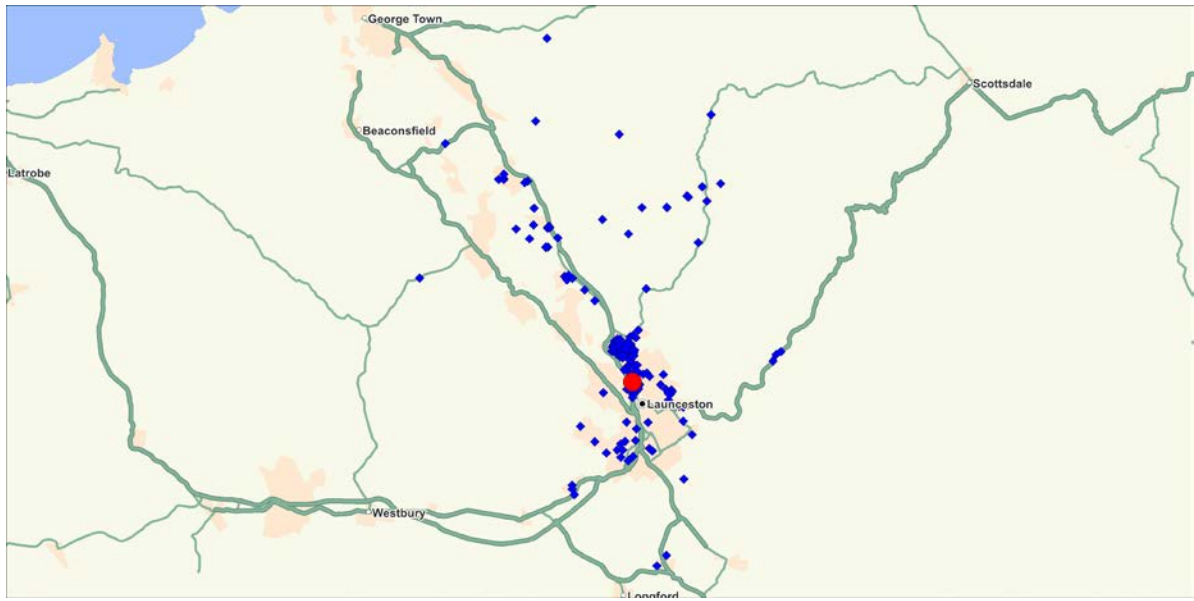
John M Mula  
Director  
Catholic Education Tasmania

## Part A: School Community

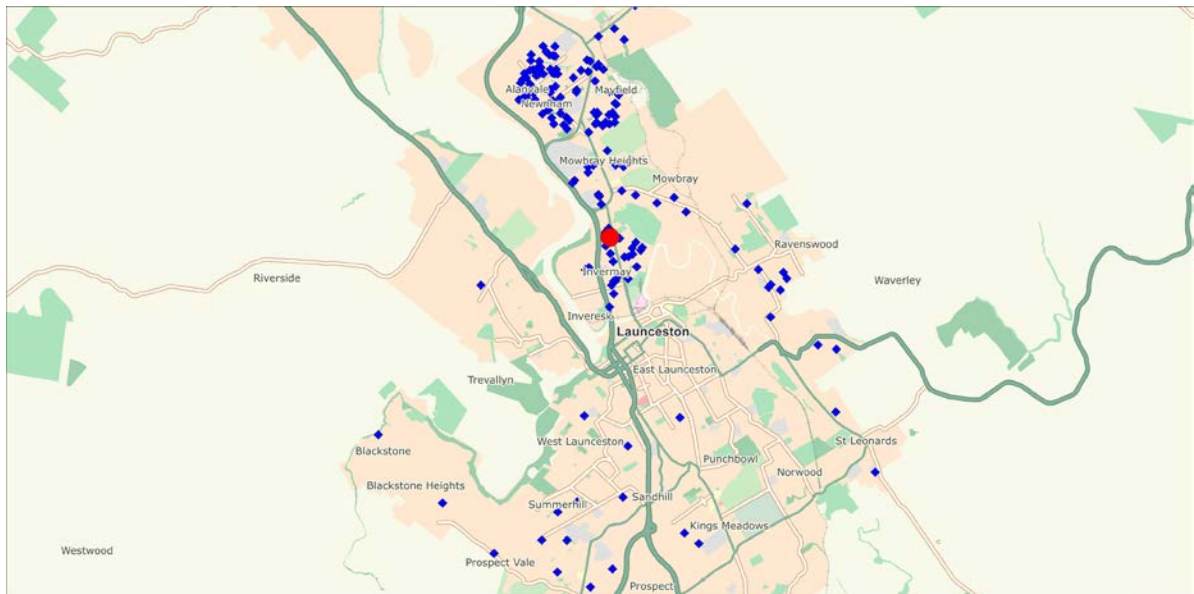
### 1. Where Students Live

The following maps show where students (blue diamonds) at the school (red circle) live.

#### All Students (2016)



#### Students living near the school (2016)

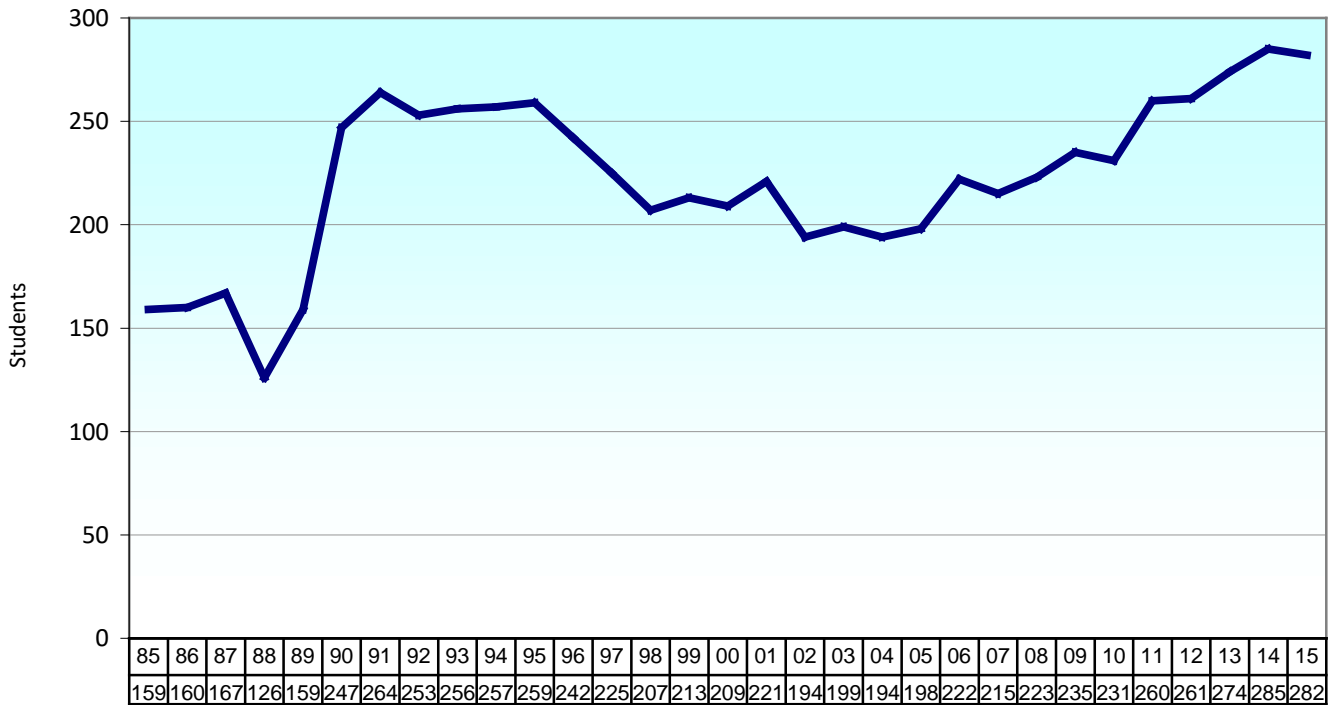


**2. Enrolment Trends**

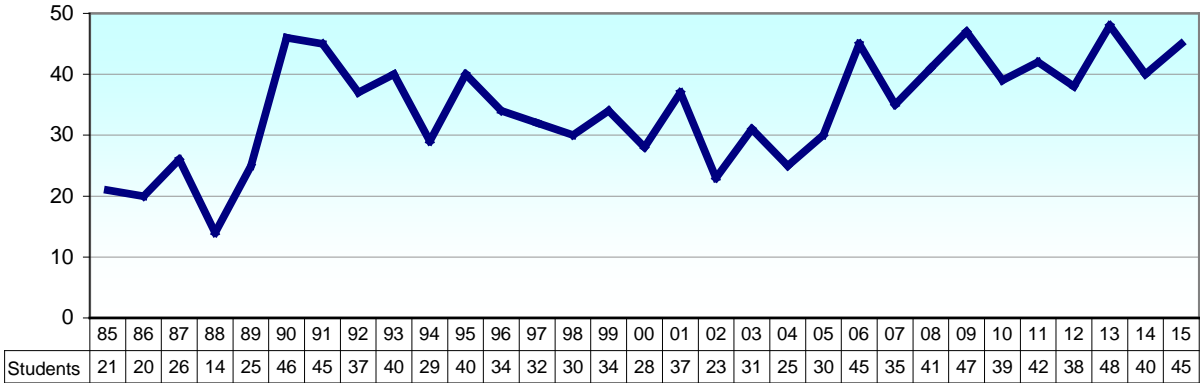
**Number of Students, 2015**

	Students	Change from 2014
Prep	45	5
Grade 1	37	-9
Grade 2	48	10
Grade 3	33	-11
Grade 4	39	0
Grade 5	38	-6
Grade 6	42	8
<b>Total Students</b>	<b>282</b>	<b>-3</b>

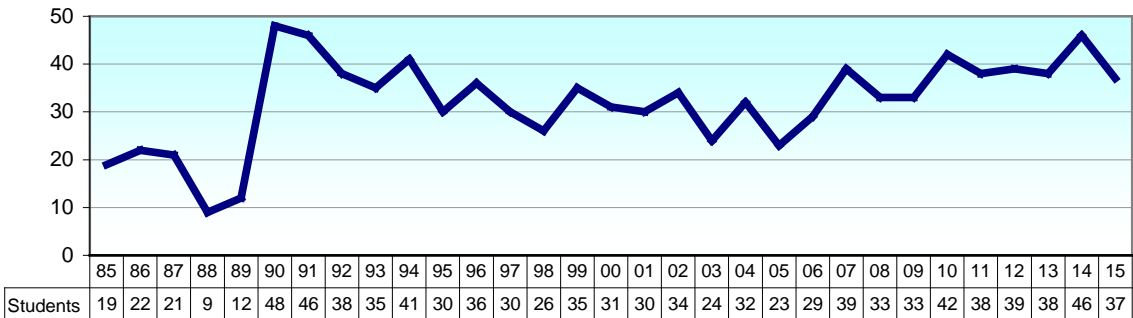
**Total Enrolments, 1985-2015**



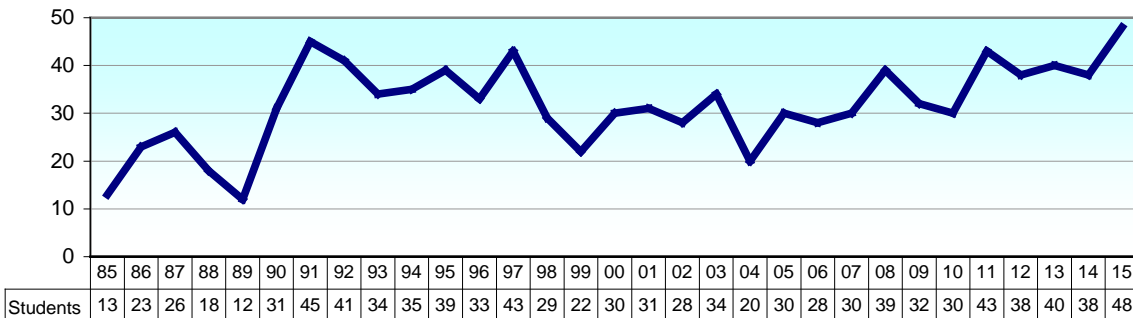
Prep, 1985-2015



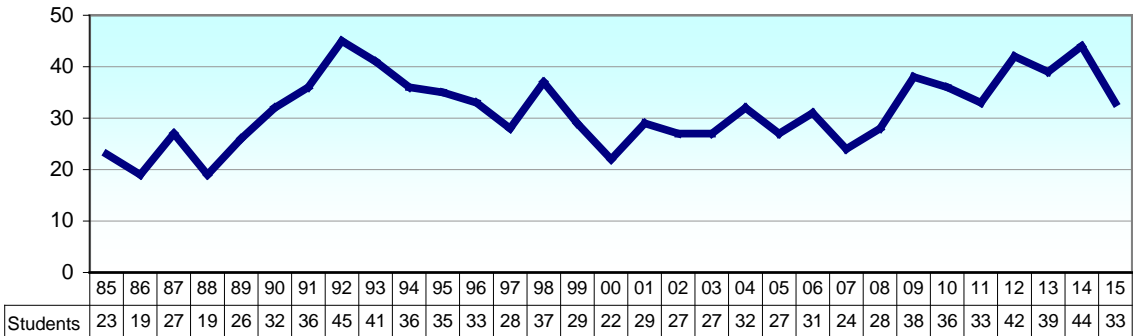
Grade 1, 1985-2015



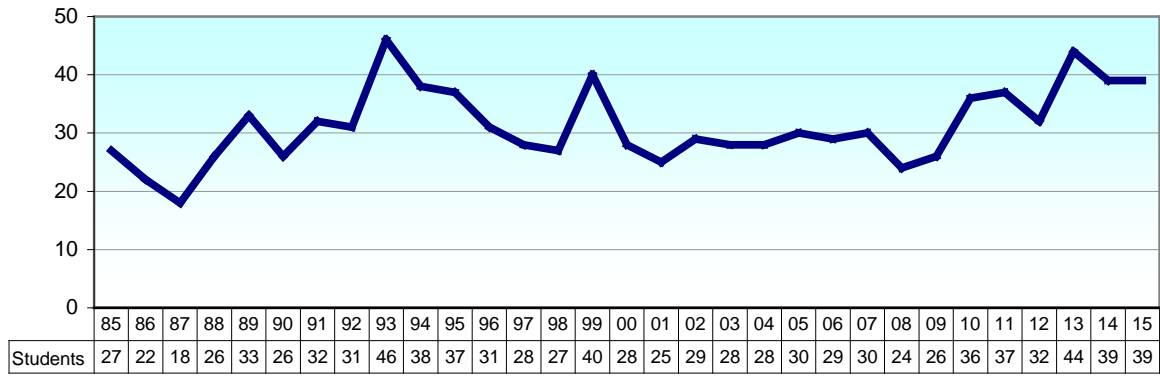
Grade 2, 1985-2015



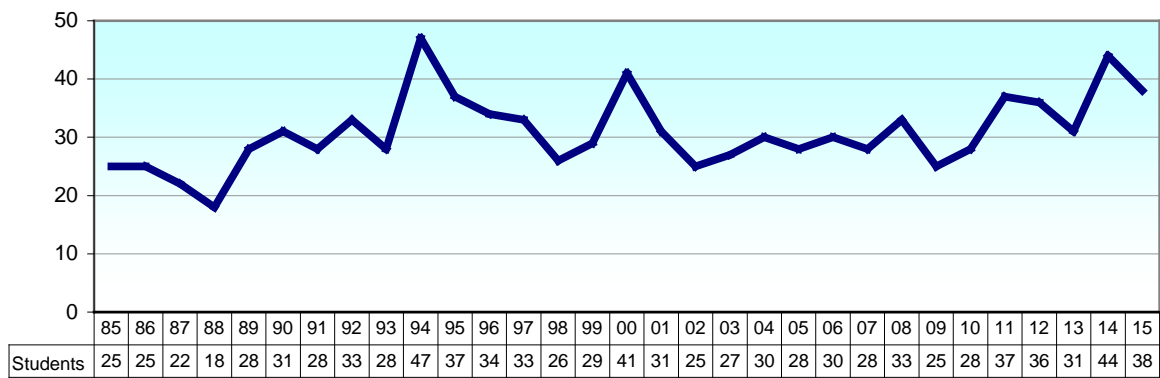
Grade 3, 1985-2015



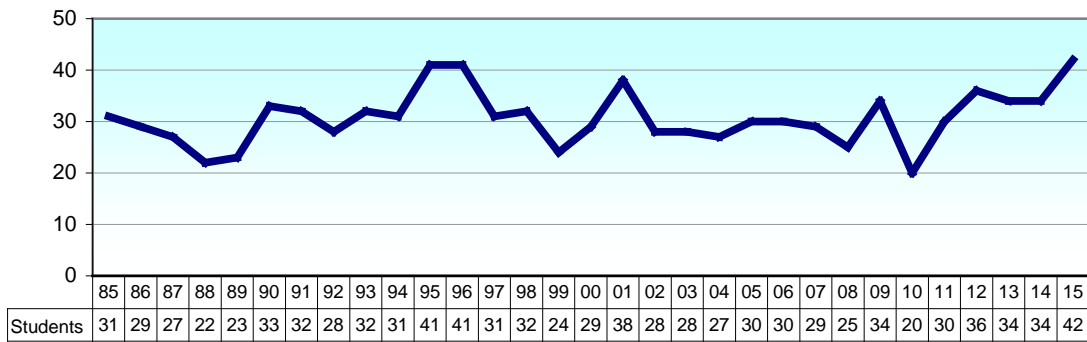
Grade 4, 1985-2015



Grade 5, 1985-2015



Grade 6, 1985-2015

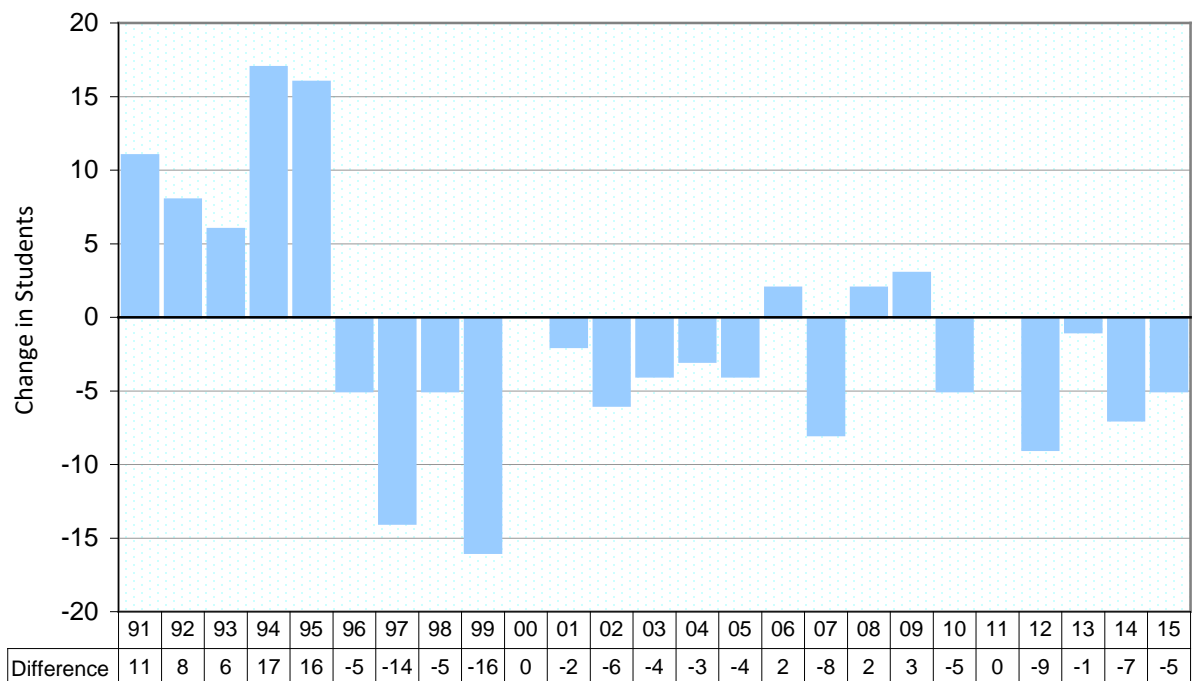


### Net Retention of Students: From Prep to Grade 6

The table and graph shows the 'retention' in the number of students from Prep to Grade 6 over time. That is, it shows the difference in the number of students in Grade 6 for each year and the number of students that were in their first year of primary schooling. For example, students in Grade 6 in 1991 were in Prep in 1985, while Grade 6 students in 2015 were in Prep in 2009. Because some students may leave the school between Prep and Grade 6, and some students in Grade 6 may have enrolled at the school after Prep, the graph and table reports the net change, rather than the retention of individual students.

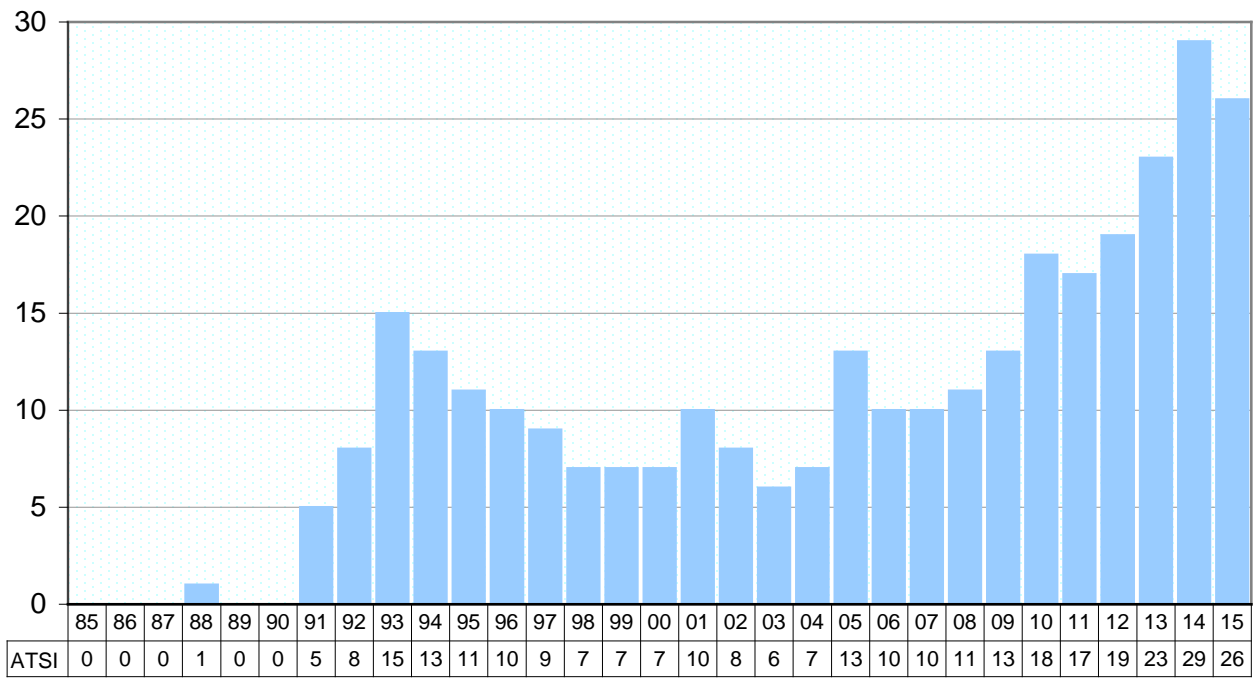
Where the net retention of students is a positive number, this means that there were more students in Grade 6 than in the corresponding Prep year. Similarly, if the number of students is negative, then there had been fewer students in Grade 6 than in the corresponding Prep year.

### Net retention for students from Prep to Grade 6, 1991-2015



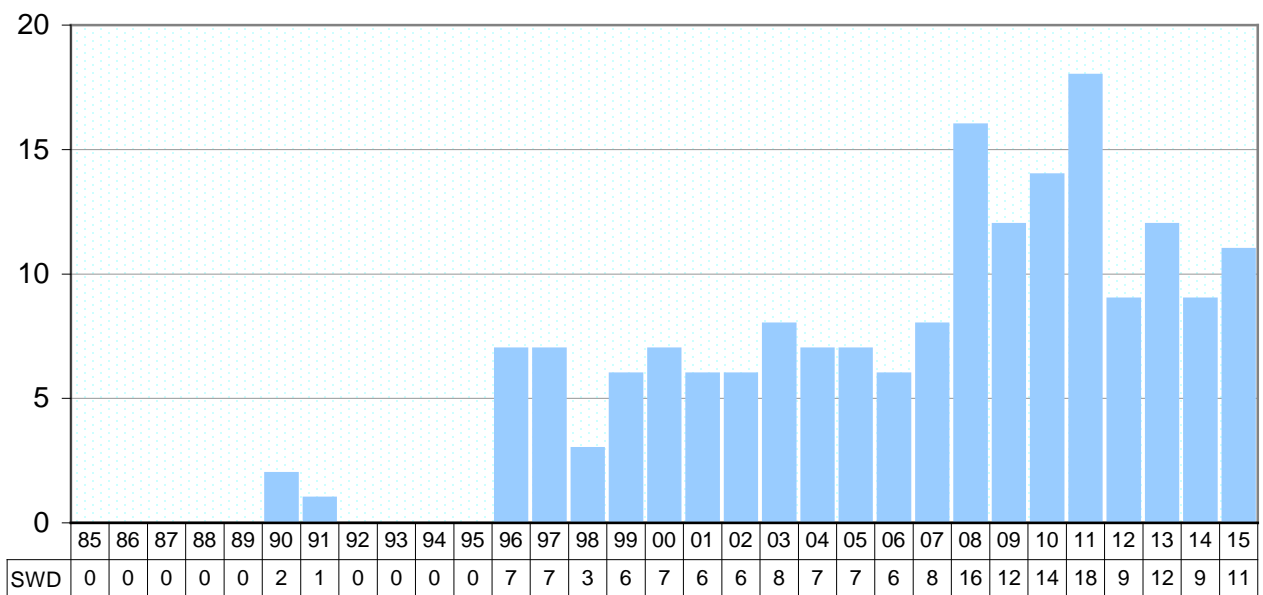
**Aboriginal and Torres Strait Islander Students**

**Aboriginal and Torres Strait Islander Students, 1985-2015**



**Students with a Disability (SWD)**

**SWD, 1985-2015**

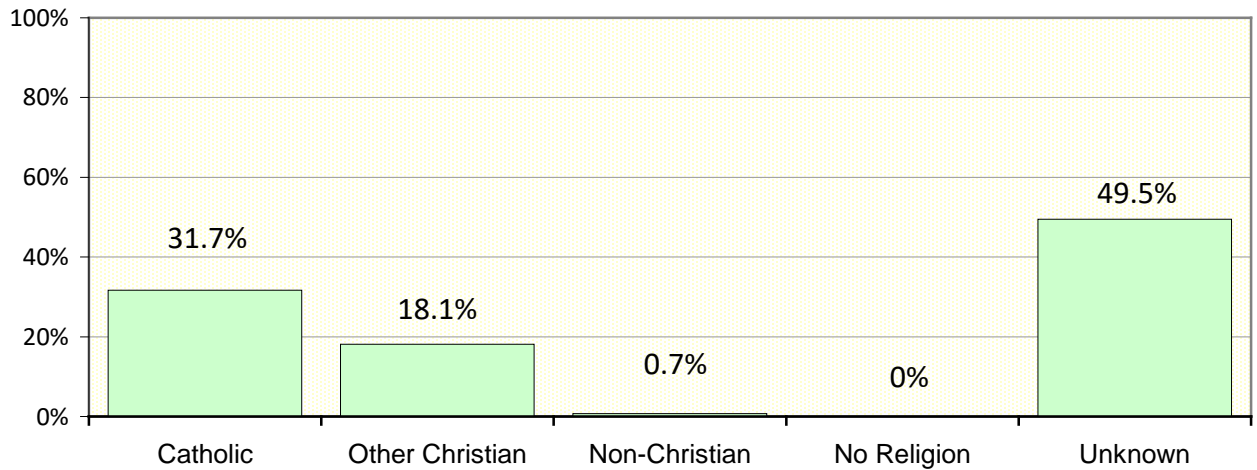




### Catholic and Non-Catholic Students

The National Catholic Education Commission (NCEC) has collected Catholic and Non-Catholic enrolments by grade and sex from all Catholic schools in Australia since 2006.

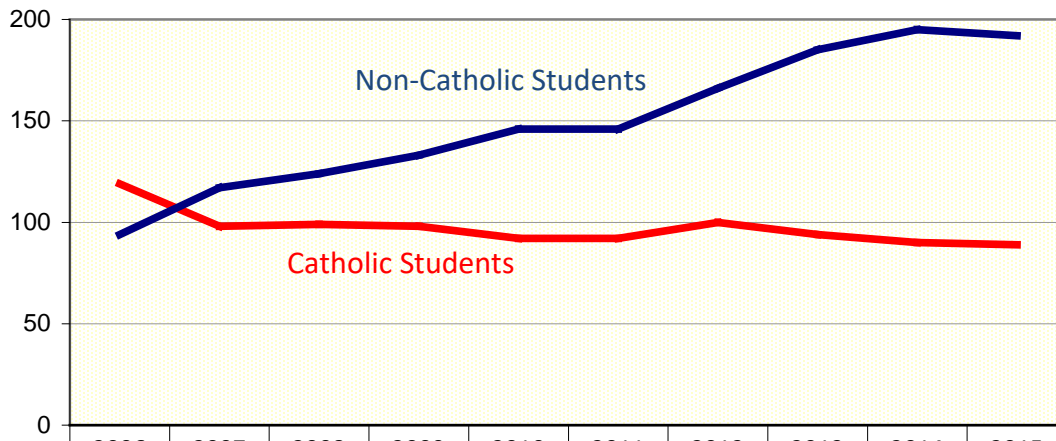
#### Catholic and Non-Catholic Students as proportion of total enrolments, 2015



Students 2015	Catholic	Other Christian	Other Faith	No Religion	Religion Unknown
No. of Students	89	51	2	0	139
% of Students	31.7%	18.1%	0.7%	0%	49.5%

Students 2015	Catholic	Other Christian	Other Faith	No Religion	Religion Unknown
Prep	7	6	0	0	31
Grade 1	14	5	0	0	18
Grade 2	17	7	0	0	24
Grade 3	11	8	0	0	13
Grade 4	11	8	2	0	18
Grade 5	16	6	0	0	15
Grade 6	13	11	0	0	20

**Catholic and Non-Catholic Students, 2006-2015**



	2006	2007	2008	2009	2010	2011	2012	2013	2014	2015
Catholic	119	98	99	98	92	92	100	94	90	89
Non-Catholic	94	117	124	133	146	146	166	185	195	192

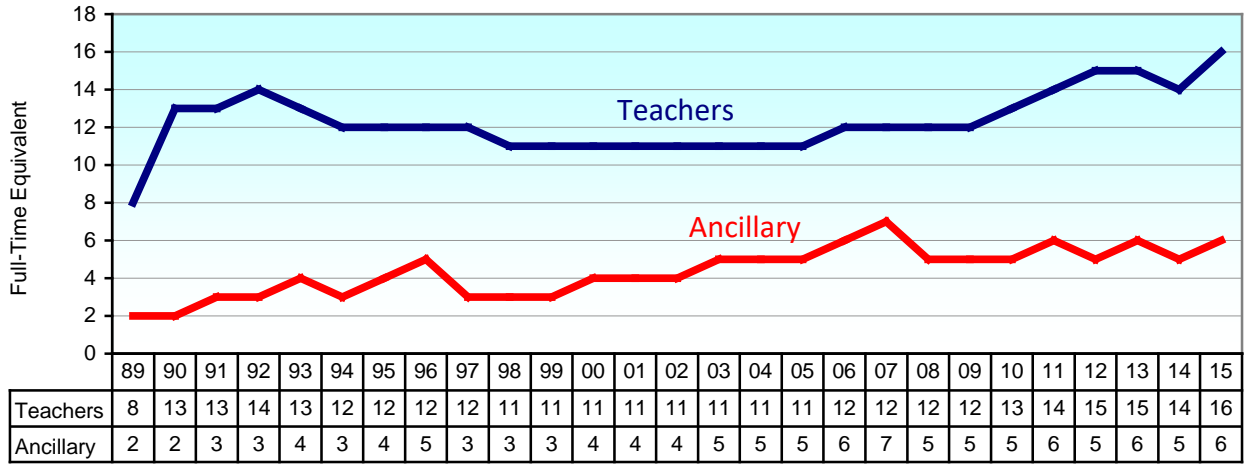
**Change in Catholic and Non-Catholic Enrolments**

	Change in Catholic Students	Change in Non-Catholic Students
Since 2006 (2006 to 2015)	-30	98
Last Year (2014 to 2015)	-1	-3

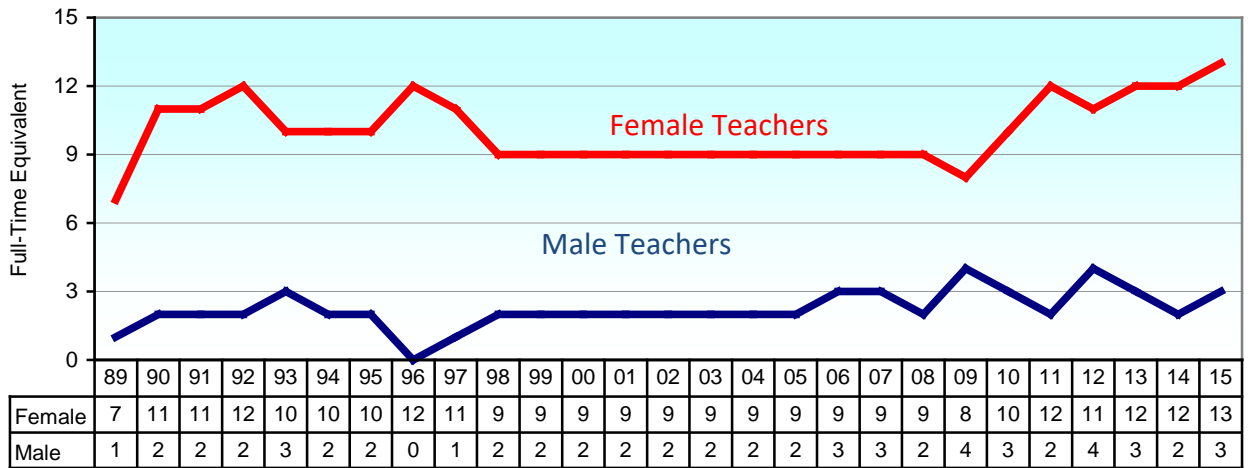
**Staffing Trends**

**Staffing Trends (FTE), 1989 to 2015**

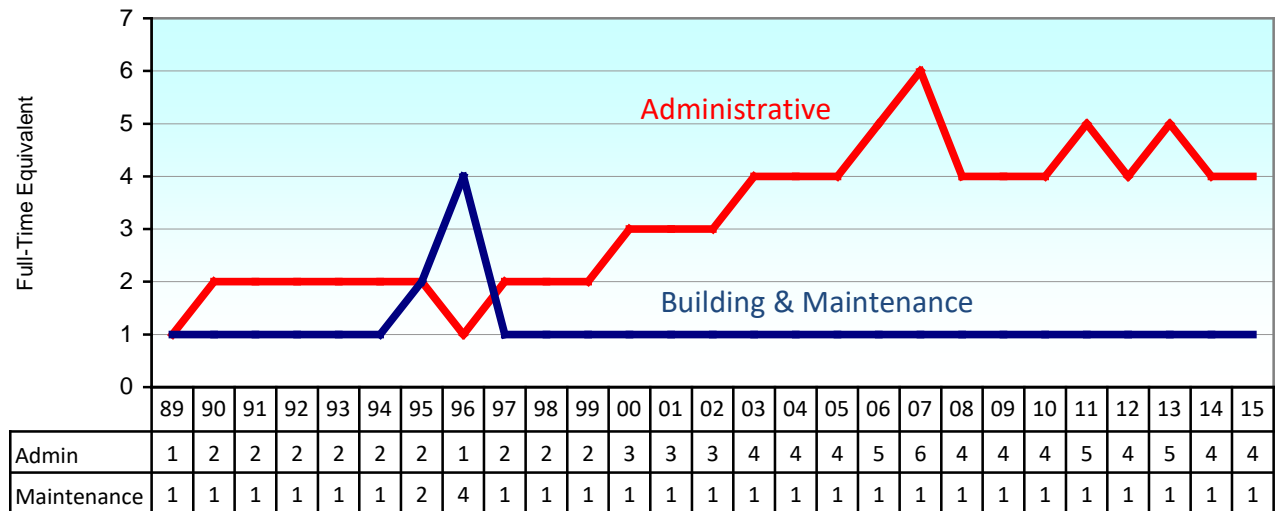
(FTE: Full-time equivalent)



**Males and Female Teachers (FTE), 1989 to 2015**



**Non-Teaching Staff (FTE), 1989 to 2015**



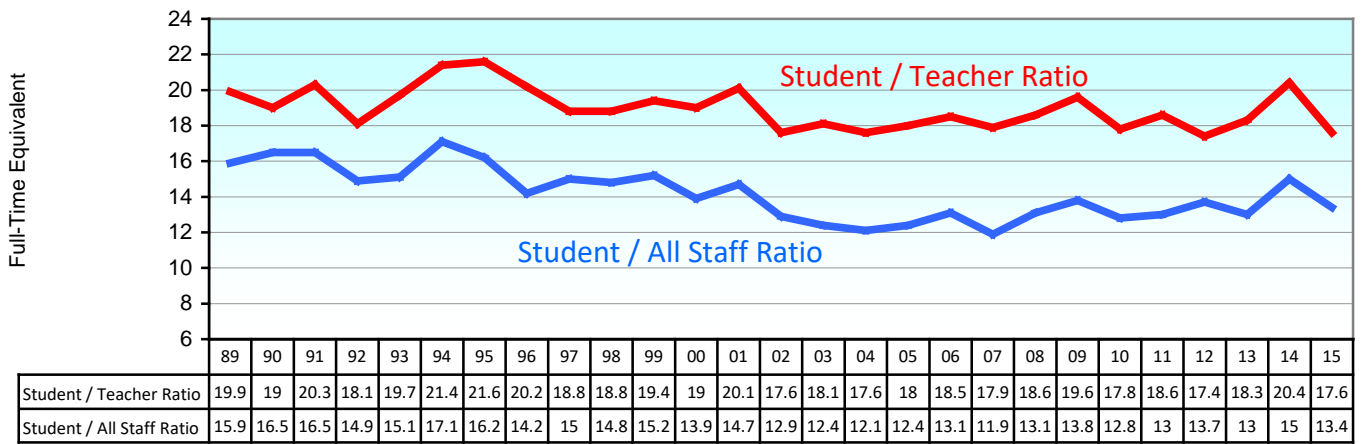
## Part B: School Resourcing

### Student to Staff Ratios

#### Student/Teacher Ratio

(Ratio of students to FTE Teachers and FTE All Staff)

#### Student/Teacher Ratios, 1989 to 2015



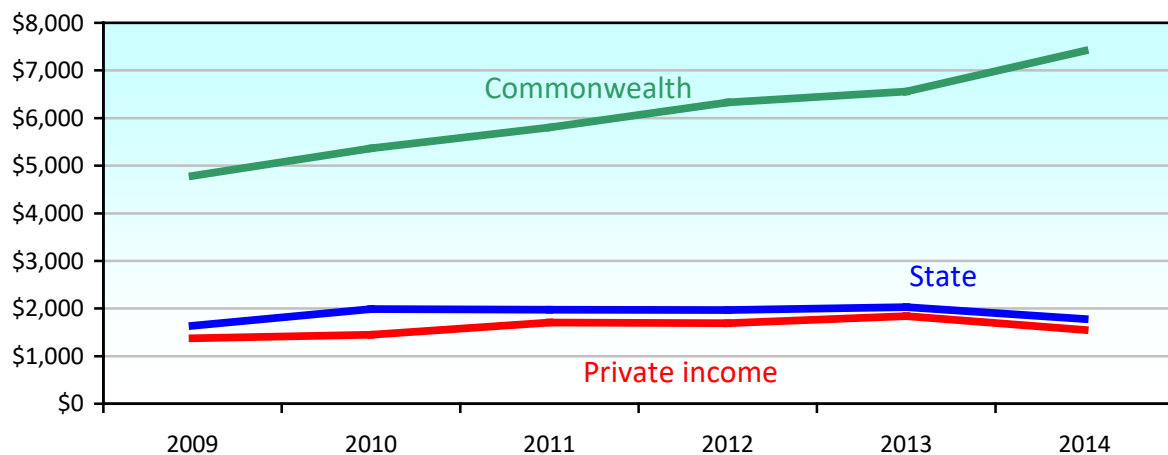
	Ratio	
	Student/Teacher Ratio	Student/All Staff Ratio
1989	19.9	15.9
2015	17.6	13.4

## MySchool Financial Reporting

The following table and the financial reporting of other schools in this report are drawn from the *MySchool* website. As such, this information may not be directly comparable to the school's audited accounts.

<b>2014</b> <i>(MySchool March 2016)</i>	<b>Total</b>	<b>%</b>	<b>Per Student</b>
Commonwealth	\$2,113,651	69%	\$7,416
State	\$507,073	17%	\$1,779
Total Private Income	\$440,939	14%	\$1,547
<i>Fees, Charges &amp; Parents</i>	<i>\$366,017</i>	<i>12%</i>	<i>\$1,284</i>
<i>Other Private Sources</i>	<i>\$74,922</i>	<i>2%</i>	<i>\$263</i>
Total Income	\$3,061,663		\$10,743
<b>MySchool Deductions</b>	\$206,713		\$725
<b>Total Recurrent Income</b>	\$2,854,950		\$10,017
<b>Capital Expenditure</b>	\$334,585		

### Per Student Funding, 2009-2013



## Commonwealth Government Funding

	Total		Per Student		
	% of Funding	Total Income	Income	Change	% Change
2009	61%	\$1,124,148	\$4,784	–	–
2010	61%	\$1,238,912	\$5,363	\$579	12.1%
2011	61%	\$1,508,034	\$5,800	\$437	8.15%
2012	63%	\$1,650,958	\$6,326	\$526	9.07%
2013	63%	\$1,796,269	\$6,556	\$230	3.64%
2014	69%	\$2,113,651	\$7,416	\$860	13.12%

## Tasmanian Government Funding

	Total		Per Student		
	% of Funding	Total Income	Income	Change	% Change
2009	21%	\$384,507	\$1,636	–	–
2010	23%	\$459,511	\$1,989	\$353	21.58%
2011	21%	\$514,133	\$1,977	-\$12	-0.6%
2012	20%	\$513,247	\$1,966	-\$11	-0.56%
2013	19%	\$555,212	\$2,026	\$60	3.05%
2014	17%	\$507,073	\$1,779	-\$247	-12.19%

## Private Income (Fees and Other Private Income)

	Total		Per Student		
	% of Funding	Total Income	Income	Change	% Change
2009	18%	\$323,208	\$1,375	–	–
2010	17%	\$334,942	\$1,450	\$75	5.45%
2011	18%	\$442,683	\$1,703	\$253	17.45%
2012	17%	\$440,786	\$1,689	-\$14	-0.82%
2013	18%	\$504,321	\$1,841	\$152	9%
2014	14%	\$440,939	\$1,547	-\$294	-15.97%

## The School's Socio-Economic Profile

### Australian Government Socio-Economic Status Score (SES) Index

The SES score is calculated from student addresses supplied by the to the Commonwealth Department of Education to calculate the school's Socio-Economic Status (SES) Index score. The calculation of the school's SES involves linking student residential addresses to Australian Bureau of Statistics (ABS) national Census data to obtain a measure of the capacity of the school community to support its school. Student residential addresses were mapped (geocoded) to the ABS' smallest spatial unit (Statistical Area Level 1, which is about 200 homes). The actual socio-economics of students may vary (either lower or higher) from the score for the area in which the students live. The national average of an SES score for an SA1 is 100.

	SES Score
2005-2008	87
2009-2013	90
2014-2017	91

### MySchool Index of Socio-Educational Advantage (ICSEA) score

The *MySchool* Index of Socio-Educational Advantage is a relative index to predict performance on NAPLAN tests. The score is a relative measure of schools based on the middle school in Australia being 1,000.

Care should be taken when interpreting the relevance of ICSEA as a socio-economic indicator, and changes to any school's score between years. This is because ICSEA scores have been influenced by ACARA's changes to methodology, and adjustments by some jurisdictions, data quality concerns, and changes to the scores of other schools.

	ICSEA Score	Percentage of Students in Quarters			
		Bottom	Middle		Top
2008	971	42%	39%	10%	10%
2009	971	42%	39%	10%	10%
2010	938	72%	15%	4%	9%
2011	980	25%	25%	33%	17%
2012	979	24%	40%	23%	14%
2013	982	34%	31%	22%	13%
2014	1004	21%	33%	30%	16%
2015	985	32%	31%	27%	11%

## Part C: Educational Outcomes

Australian Early Development Census (AEDC)	2009		2012		2015	
<b>Developmentally Vulnerable</b>						
One or more domains	7	14%	3	8%	3	7%
Two or more domains	4	8%	0	0%	1	2%
<b>Children not 'on track'</b> <i>(Developmentally at risk or Vulnerable)</i>						
Physical Health	4	8%	3	8%	9	20%
Social	19	39%	3	8%	9	20%
Emotional	10	20%	3	8%	6	14%
Language and Cognitive <i>(school-based)</i>	4	8%	1	3%	2	5%
Communication and General Knowledge	5	10%	5	14%	8	18%



## Student Performance

### NAPLAN Results (National Context)

The following tables display the average NAPLAN scores for each domain for the school, and display the comparison to the national average, using the *MySchool* colour scheme.

	Substantially above the national average		Below the national average
	Above the national average		Substantially below the national average
	Close to the national average		

Grade 3	2008	2009	2010	2011	2012	2013	2014	2015
Reading	372	365	386	399	405	394	447	406
Writing	400	396	385	381	395	390	384	398
Spelling	390	393	386	385	401	392	423	408
Grammar	383	404	381	383	401	386	421	397
Numeracy	379	352	377	394	389	383	406	373

Grade 5	2008	2009	2010	2011	2012	2013	2014	2015
Reading	463	470	450	483	492	486	506	476
Writing	473	483	440	448	465	488	473	438
Spelling	482	491	460	464	485	482	491	468
Grammar	481	479	476	487	478	475	486	457
Numeracy	441	455	478	448	487	454	470	465

### Change in School's Average NAPLAN Score, Grade 3 to Grade 5

Grade 3 to Grade 5	Grade 3 (2013)	Grade 5 (2015)	Change
Reading	394	476	82
Writing	390	438	48
Spelling	392	468	76
Grammar	386	457	71
Numeracy	383	465	82

## Part D: Other Schools

This section provides comparative, public information about other schools of interest the school. Schools selected for comparison include:

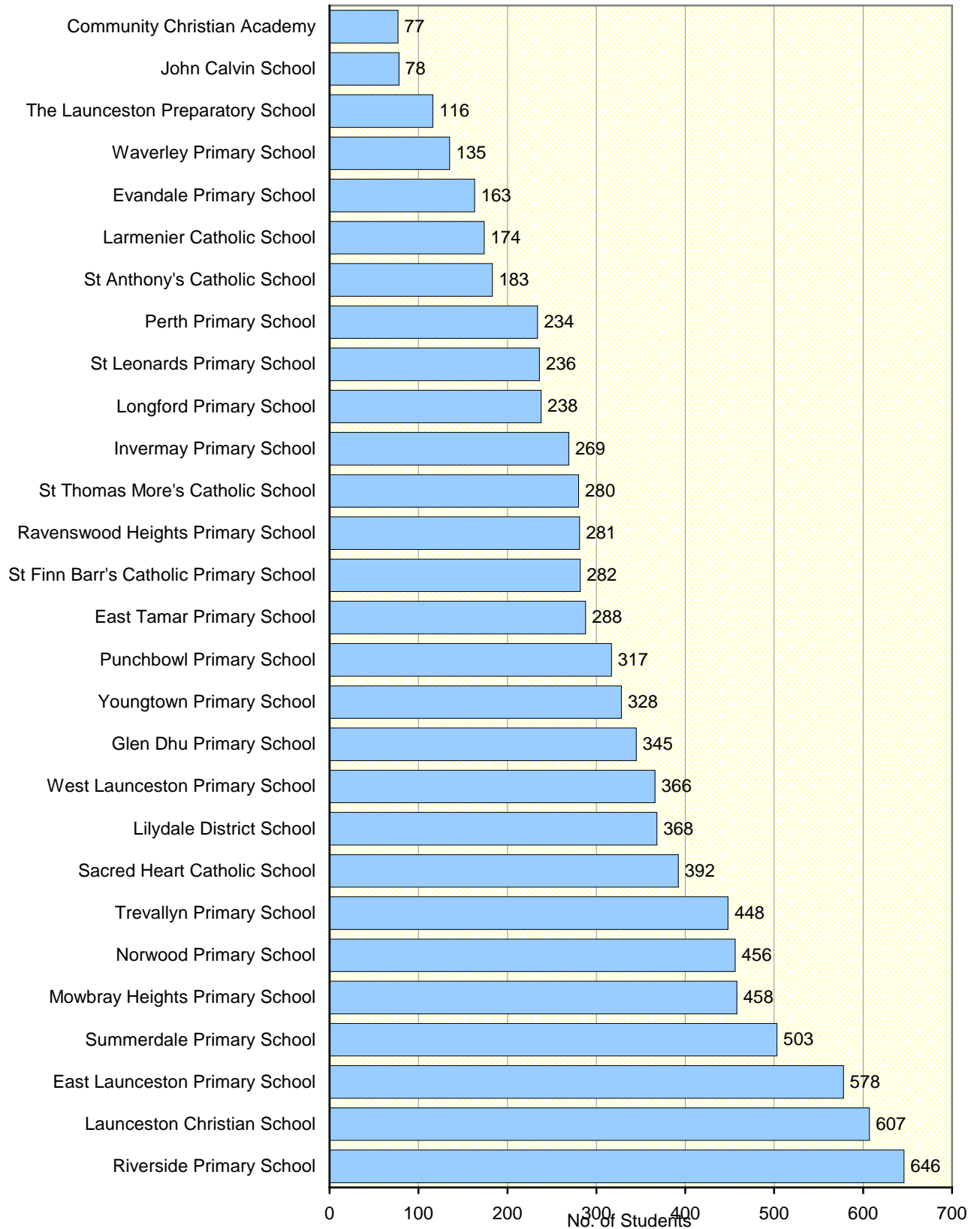
**Catholic Schools:** Larmenier Catholic School (St Leonards), Sacred Heart Catholic School (Launceston), St Anthony's Catholic School (Riverside), St Thomas More's Catholic School (Launceston)

**Other Non-Government Schools:** Community Christian Academy (Newstead), John Calvin School (Launceston), Launceston Christian School (Launceston), The Launceston Preparatory School (Launceston)

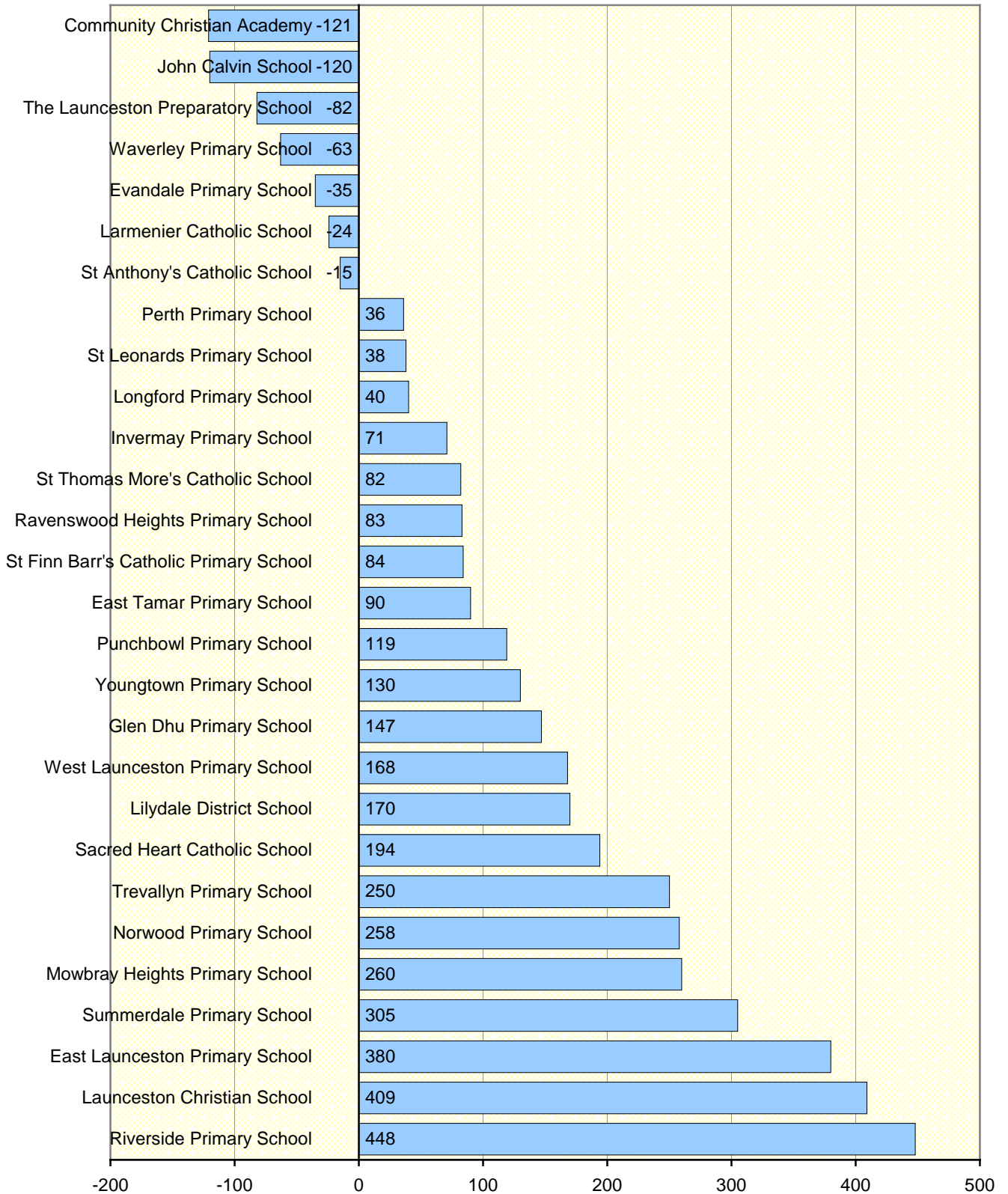
**Government Schools:** East Launceston Primary, East Tamar Primary, Evandale Primary, Glen Dhu Primary, Invermay Primary, Lilydale District, Longford Primary, Mowbray Heights Primary, Norwood Primary, Perth Primary, Punchbowl Primary, Ravenswood Heights Primary, Riverside Primary, St Leonards Primary, Summerdale Primary, Trevallyn Primary, Waverley Primary, West Launceston Primary, Youngtown Primary

## Enrolments

## Total Students, 2015



**Changes to enrolments, 2005 – 2015**



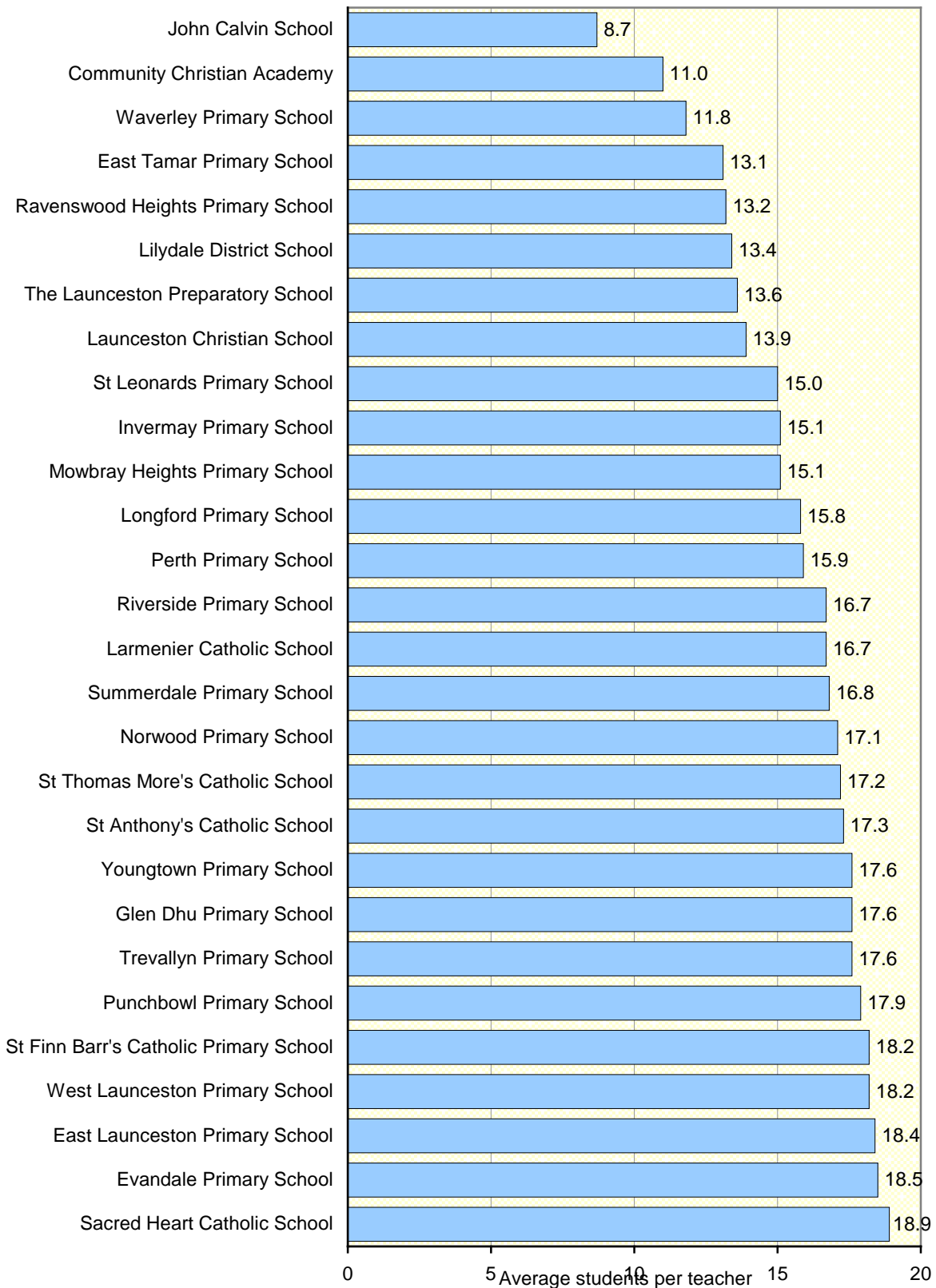
**Percentage Indigenous, Language background other than English (LBOTE) and ICSEA Score, 2015**

	<b>% Indigenous</b>	<b>% LBOTE</b>	<b>ICSEA Score</b>
Community Christian Academy	0%	0%	1027
East Launceston Primary School	2%	11%	1060
East Tamar Primary School	16%	4%	869
Evandale Primary School	1%	1%	995
Glen Dhu Primary School	7%	14%	989
Invermay Primary School	10%	9%	925
John Calvin School	0%	0%	1034
Larmenier Catholic School	5%	4%	1005
Launceston Christian School	1%	11%	1054
Lilydale District School	7%	0%	950
Longford Primary School	9%	0%	948
Mowbray Heights Primary School	11%	20%	936
Norwood Primary School	7%	1%	993
Perth Primary School	4%	0%	966
Punchbowl Primary School	4%	4%	1016
Ravenswood Heights Primary School	18%	0%	868
Riverside Primary School	5%	2%	1006
Sacred Heart Catholic School	4%	0%	1067
St Anthony's Catholic School	2%	4%	995
St Finn Barr's Catholic Primary School	9%	1%	985
St Leonards Primary School	4%	2%	953
St Thomas More's Catholic School	1%	1%	1049
Summerdale Primary School	6%	1%	970
The Launceston Preparatory School	2%	0%	1141
Trevallyn Primary School	3%	2%	1061
Waverley Primary School	12%	0%	904
West Launceston Primary School	3%	7%	1003
Youngtown Primary School	7%	1%	956

ICSEA is the *MySchool* Index of The Index of Community Socio-Educational Advantage. 1000 is the mean for all Australian schools.

## Resourcing

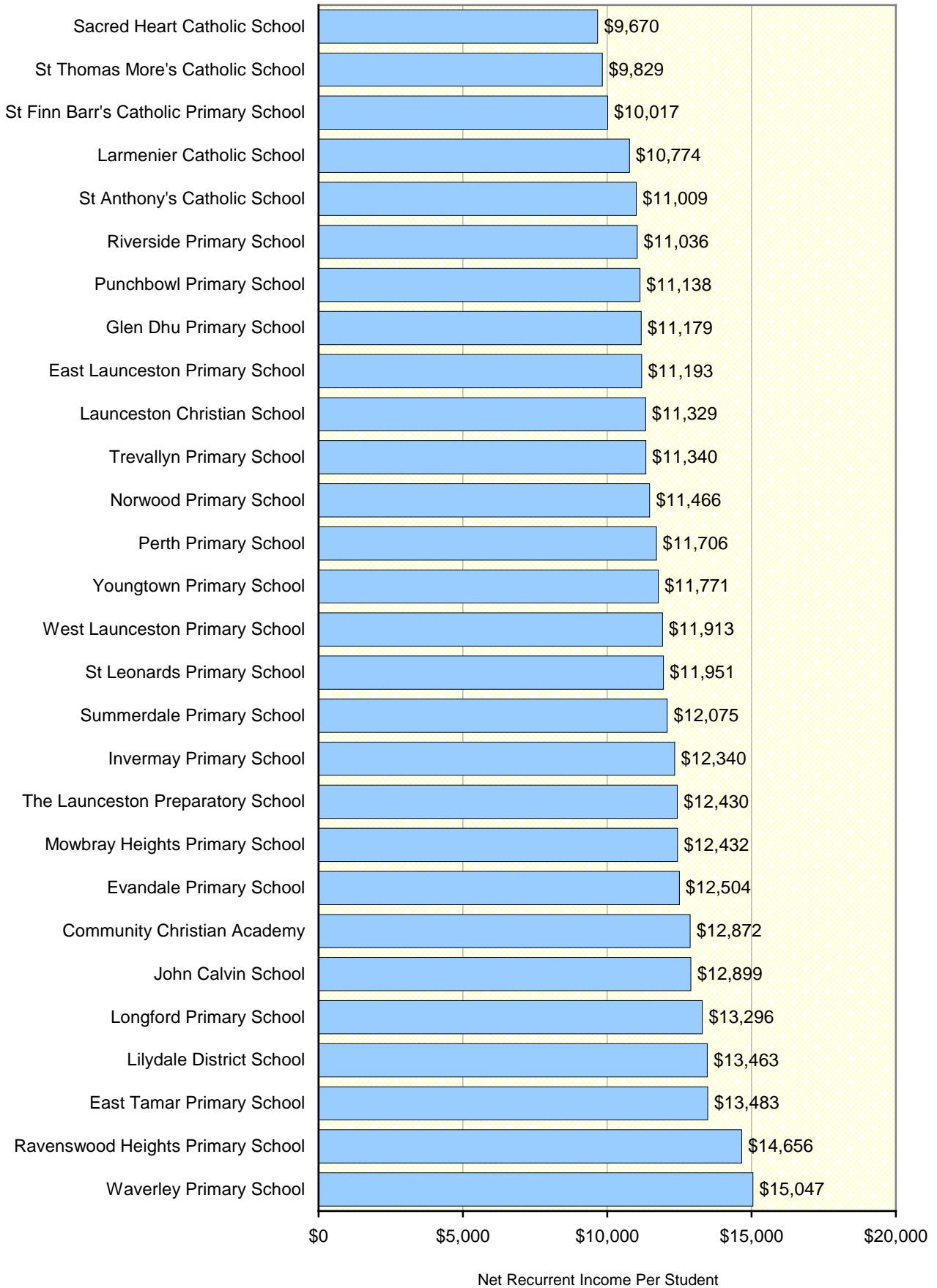
## Student/teacher Ratio 2015



**Student/teacher and Student/All Staff Ratio, 2015**

	Students	Teachers	Other Staff	Student/Teacher Ratio	Student/All Staff Ratio
Community Christian Academy	77	7	3	11.0	7.7
East Launceston Primary School	578	32	12	18.4	13.5
East Tamar Primary School	288	22	14	13.1	7.9
Evandale Primary School	163	9	5	18.5	11.8
Glen Dhu Primary School	345	20	9	17.6	12.1
Invermay Primary School	269	18	9	15.1	9.9
John Calvin School	78	9	3	8.7	6.4
Larmenier Catholic School	174	10	4	16.7	12.1
Launceston Christian School	607	44	22	13.9	9.2
Lilydale District School	368	28	12	13.4	9.3
Longford Primary School	238	15	8	15.8	10.2
Mowbray Heights Primary School	458	30	16	15.1	9.9
Norwood Primary School	456	27	12	17.1	11.9
Perth Primary School	234	15	7	15.9	10.6
Punchbowl Primary School	317	18	10	17.9	11.6
Ravenswood Heights Primary School	281	21	12	13.2	8.4
Riverside Primary School	646	39	12	16.7	12.8
Sacred Heart Catholic School	392	21	9	18.9	13.1
St Anthony's Catholic School	183	11	4	17.3	12.2
St Finn Barr's Catholic Primary School	282	16	6	18.2	13.4
St Leonards Primary School	236	16	8	15.0	10.0
St Thomas More's Catholic School	280	16	7	17.2	12.1
Summerdale Primary School	503	30	17	16.8	10.8
The Launceston Preparatory School	116	9	3	13.6	10.4
Trevallyn Primary School	448	25	9	17.6	12.9
Waverley Primary School	135	12	8	11.8	6.8
West Launceston Primary School	366	20	12	18.2	11.4
Youngtown Primary School	328	19	10	17.6	11.4

### Net Recurrent Income Per student (Government Grants, Fees and Other Income), 2014





## NAPLAN

### NAPLAN, 2015

The following tables display the average NAPLAN scores for each domain and the comparison to the national average, using the *MySchool* colour scheme.

	Substantially above the national average		Below the national average
	Above the national average		Substantially below the national average
	Close to the national average		

Year 3	Reading	Writing	Spelling	Grammar	Numeracy
Community Christian Academy					
East Launceston Primary School					
East Tamar Primary School					
Evandale Primary School					
Glen Dhu Primary School					
Invermay Primary School					
John Calvin School					
Larmenier Catholic School					
Launceston Christian School					
Lilydale District School					
Longford Primary School					
Mowbray Heights Primary School					
Norwood Primary School					
Perth Primary School					
Punchbowl Primary School					
Ravenswood Heights Primary School					
Riverside Primary School					
Sacred Heart Catholic School					
St Anthony's Catholic School					
St Finn Barr's Catholic Primary School					
St Leonards Primary School					
St Thomas More's Catholic School					
Summerdale Primary School					
The Launceston Preparatory School					
Trevallyn Primary School					
Waverley Primary School					
West Launceston Primary School					
Youngtown Primary School					

**NAPLAN, 2015**

The following tables display the average NAPLAN scores for each domain and the comparison to the national average, using the *MySchool* colour scheme.

	Substantially above the national average
	Above the national average
	Close to the national average

	Below the national average
	Substantially below the national average

Year 5	Reading	Writing	Spelling	Grammar	Numeracy
Community Christian Academy					
East Launceston Primary School					
East Tamar Primary School					
Evandale Primary School					
Glen Dhu Primary School					
Invermay Primary School					
John Calvin School					
Larmenier Catholic School					
Launceston Christian School					
Lilydale District School					
Longford Primary School					
Mowbray Heights Primary School					
Norwood Primary School					
Perth Primary School					
Punchbowl Primary School					
Ravenswood Heights Primary School					
Riverside Primary School					
Sacred Heart Catholic School					
St Anthony's Catholic School					
St Finn Barr's Catholic Primary School					
St Leonards Primary School					
St Thomas More's Catholic School					
Summerdale Primary School					
The Launceston Preparatory School					
Trevallyn Primary School					
Waverley Primary School					
West Launceston Primary School					
Youngtown Primary School					

**Change in Average NAPLAN Score, Grade 3 to Grade 5**

	<b>Reading</b>	<b>Writing</b>	<b>Spelling</b>	<b>Grammar</b>	<b>Numeracy</b>
Community Christian Academy	79	78	80	70	142
East Launceston Primary School	58	43	67	19	60
East Tamar Primary School	—	—	—	—	—
Evandale Primary School	79	56	106	63	97
Glen Dhu Primary School	94	59	74	80	84
Invermay Primary School	17	11	62	31	61
John Calvin School	85	96	59	108	102
Larmenier Catholic School	92	61	73	71	104
Launceston Christian School	69	83	100	60	79
Lilydale District School	94	66	78	89	77
Longford Primary School	92	66	70	66	86
Mowbray Heights Primary School	63	52	77	66	89
Norwood Primary School	62	51	67	74	84
Perth Primary School	75	64	96	85	85
Punchbowl Primary School	67	50	75	64	102
Ravenswood Heights Primary School	53	32	75	60	55
Riverside Primary School	78	83	103	78	99
Sacred Heart Catholic School	68	32	62	59	79
St Anthony's Catholic School	65	52	77	45	61
St Finn Barr's Catholic Primary School	82	48	76	71	82
St Leonards Primary School	76	91	95	99	85
St Thomas More's Catholic School	68	47	71	71	93
Summerdale Primary School	83	56	88	94	97
The Launceston Preparatory School	115	81	136	131	120
Trevallyn Primary School	84	71	96	102	95
Waverley Primary School	90	57	111	118	115
West Launceston Primary School	81	40	105	66	111
Youngtown Primary School	78	53	75	62	101

